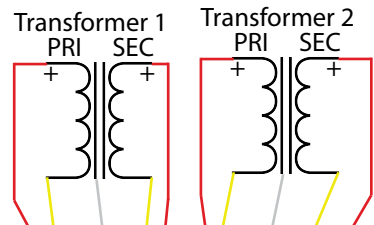
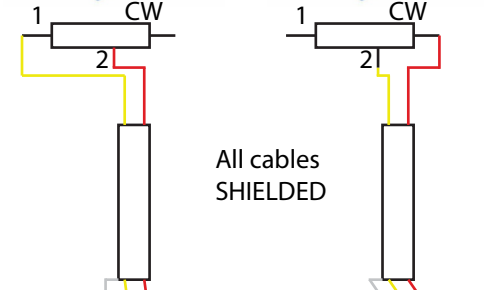
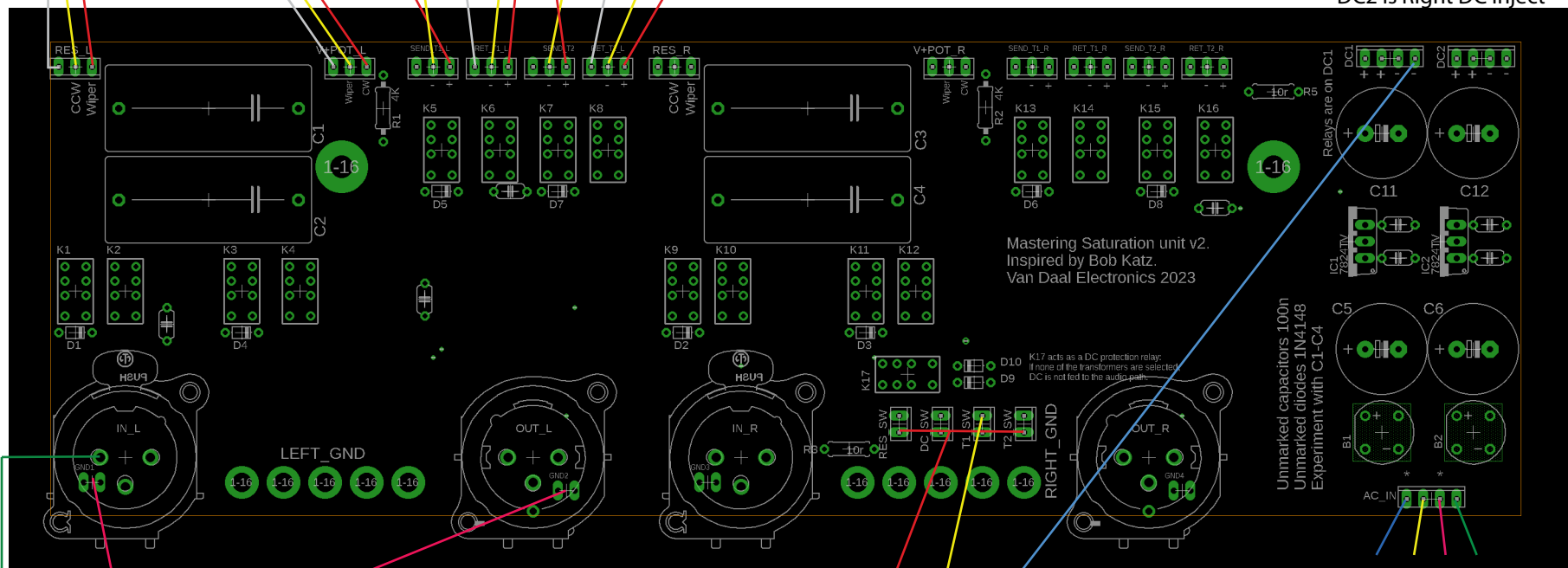


Left Series Resistance L_DC inject

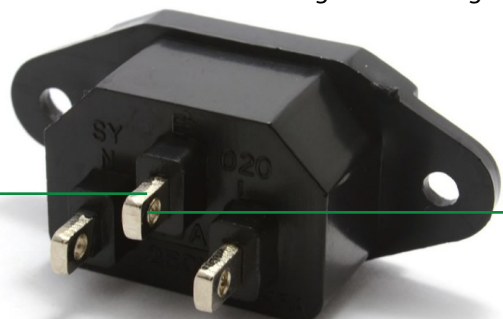


DC1 is Left DC inject
DC2 is Right DC inject



XLR Ground can be lifted if needed.
Solder a jumper if no lift.

Wire XLR Pin 1 to Mains Voltage connector ground.



Wire to Chassis

LED - leg is wired to PSU



Dual Secondary transformer
Twist the wires!